

MUMBLES COASTAL PROTECTION SCHEME



PROJECT UPDATE: JANUARY 2025

A significant milestone has been achieved as progress on the Mumbles Coastal Defence project continues to move forward. Recently, the first artwork panel was unveiled, celebrating the area's unique heritage and natural beauty. This inaugural panel, located on the reverse side of the wave return wall, features intricate designs of marine life, including starfish, shellfish, water worms, mermaid's purses, and distinctive Oystercatchers, all brought to life through bespoke formwork liners. These designs, created by Swansea-based artist Catrin Jones, not only enrich the seawall's aesthetic but also serve as a tribute to Mumbles' deep-rooted maritime identity.

At the same time, the refurbishment of the historic Mumbles Tram poles near Oystermouth car park has been completed. Once weathered and overlooked, these poles have been meticulously restored to their original colours, preserving a treasured piece of local history for the enjoyment of future generations. Additionally, the access improvements at Seaview steps will shortly reopen a vital link to the beach, following critical foreshore works to enhance safety and accessibility. Together, these achievements reflect the project's dedication to honouring Mumbles' cultural significance while ensuring that the coastline remains inclusive and inviting for all.

The next phase of construction centres on the reconstruction of the slipways at Southend and near Knab Rock. These key areas are essential in restoring public access to the waterfront and supporting various recreational activities. Significant progress is also being made in developing public realm spaces, including creating a widened shared promenade and meandering pathways that enhance the area's accessibility and charm. These spaces are further enriched with the addition of newly installed benches, loungers, and picnic tables, offering opportunities for rest and relaxation. Meanwhile, extensive landscaping and tree planting are underway to craft an inviting and ecologically vibrant environment. These enhancements underline the project's commitment to preserving Mumbles' historical and natural heritage while fostering a strong connection between the community and its treasured coastline.

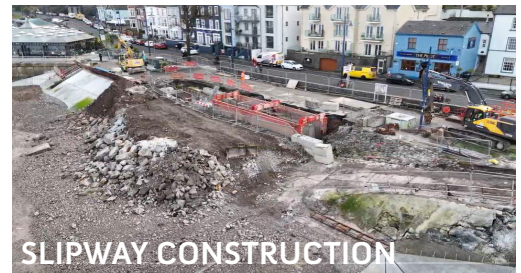
In December, the scheme provided vital support to the local foodbank, ensuring that families in need had access to essential supplies during the festive period. Additionally, as part of our commitment to fostering community initiatives, the scheme proudly sponsored Newton Athletic FC, helping to promote grassroots sports and encourage engagement across all age groups.



SLIPWAY CONSTRUCTION



SEAVIEW STEPS CONSTRUCTION



SLIPWAY CONSTRUCTION



SEA WALL ARTWORK



RENOVATION OF TRAM POLES



SEA WALL ARTWORK

